

FISCAL YEAR	SHEET NO.	TOTAL SHEETS

INDEX OF SHEETS

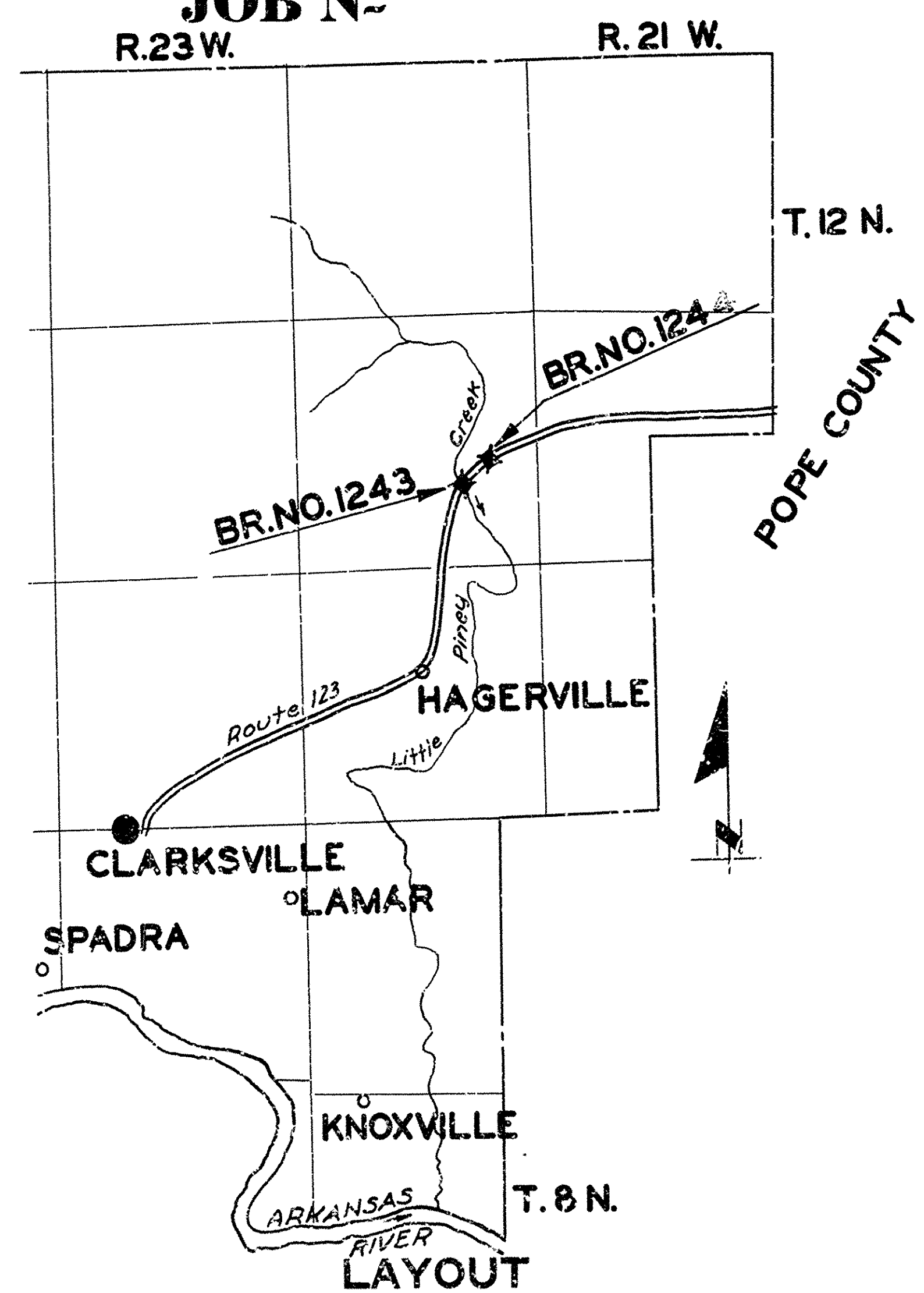
STATE OF ARKANSAS  
STATE HIGHWAY COMMISSION

QUANTITIES

**PLAN OF PROPOSED BRIDGES**  
**OVER**  
**LITTLE PINEY CREEK**  
**JOHNSON COUNTY**

ROUTE 123 SEC. 3

JOB NO



**LAYOUT**  
Scale: (approximate) 1" = 2.5 Mi.

LENGTH OF PROJECT =  
LENGTH OF BRIDGES =  
LENGTH OF EMBANKMENT =

The Specifications adopted by the State Highway Commission, May 30<sup>th</sup>, 1925 apply with subsequent revisions and Special Provisions noted apply to this Project.

Pamphlet	Item	Revised	No. of Sheets
A		Sept. 1st, 1928	
B			
C			
D		July 1st, 1928	
E			
F			
G			
H		Oct. 1st, 1928	
I			
J		Jan. 1st, 1929	
K			
L		Jan. 1st, 1929	

**SPECIAL PROVISIONS**  
Item No. of Sheets

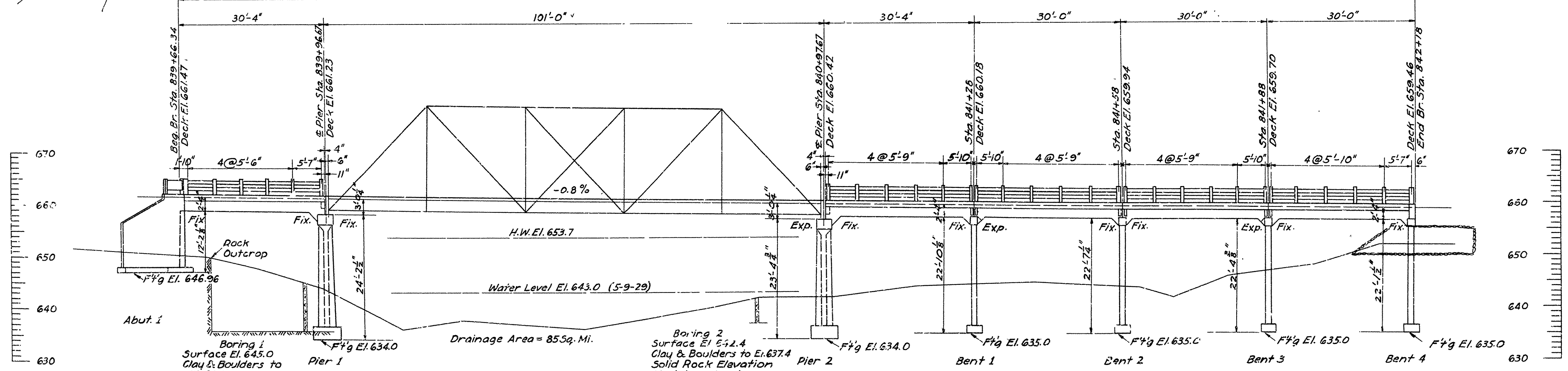
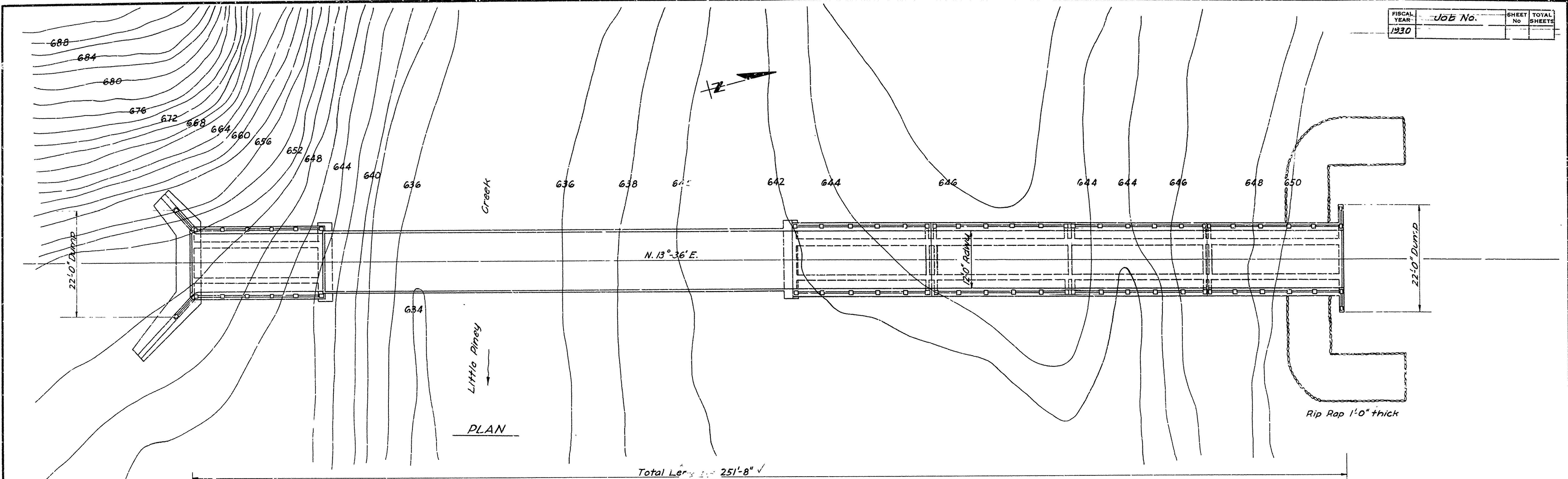
APPROVED  
CHAIRMAN - STATE HIGHWAY COMMISSION

APPROVED  
STATE HIGHWAY ENGINEER

BRIDGE ENGINEER BRIDGES NO.

DRAWING NO. 3323

FISCAL YEAR	1930	JOB No.		SHEET No.		TOTAL SHEETS	
-------------	------	---------	--	-----------	--	--------------	--



B.M. El. 648.55 Nail in 18" White Oak, 45 Ft. Rt. of Sta. 838+30

Item No.	Description	Quantity	Unit
12	Solid Rock Excavation	600	Cu. Yds.
12	Common Excavation	2,400	" "
13	Dry Excavation for Structures	32	" "
13	Wet Excavation "	200	" "
54	Class "A" Concrete	106.91	" "
54	" "S" "	104.82	" "
55	Reinforcing Steel	32,500	Lbs.
56	Structural Steel (Trusses)	46,450	" "
69	Rip Rap	39	Cu. Yds.
74	Concrete Railing for Structures	716.44	Lin. Ft.
13	Rock Excavation for Structures	55	Cu. Yds.

LAYOUT  
 BRIDGE OVER PINEY CREEK  
 JOHNSON COUNTY  
 ROUTE 123 SEC. 3  
 ARKANSAS STATE HIGHWAY COMMISSION  
 LITTLE ROCK, ARK.

Scale: 1 in. = 10 ft.

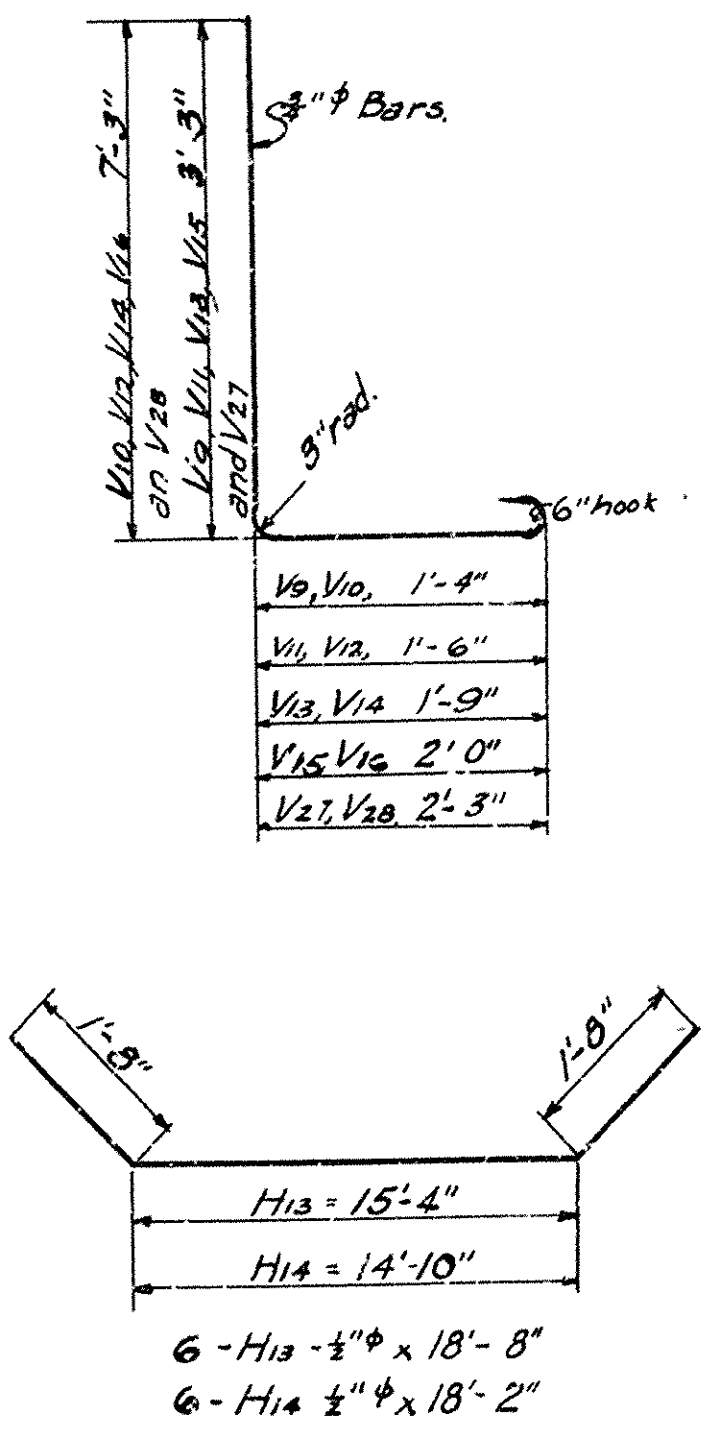
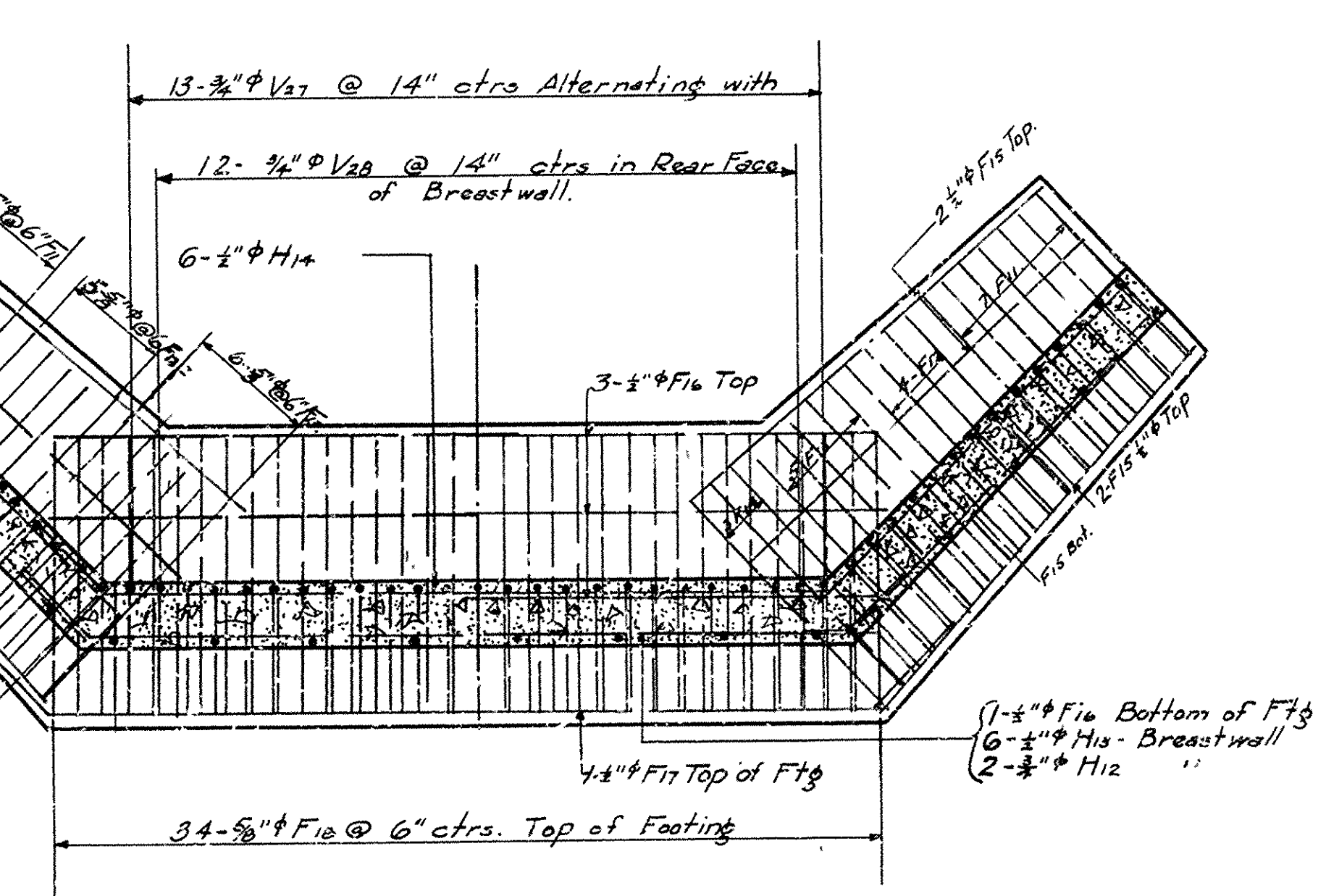
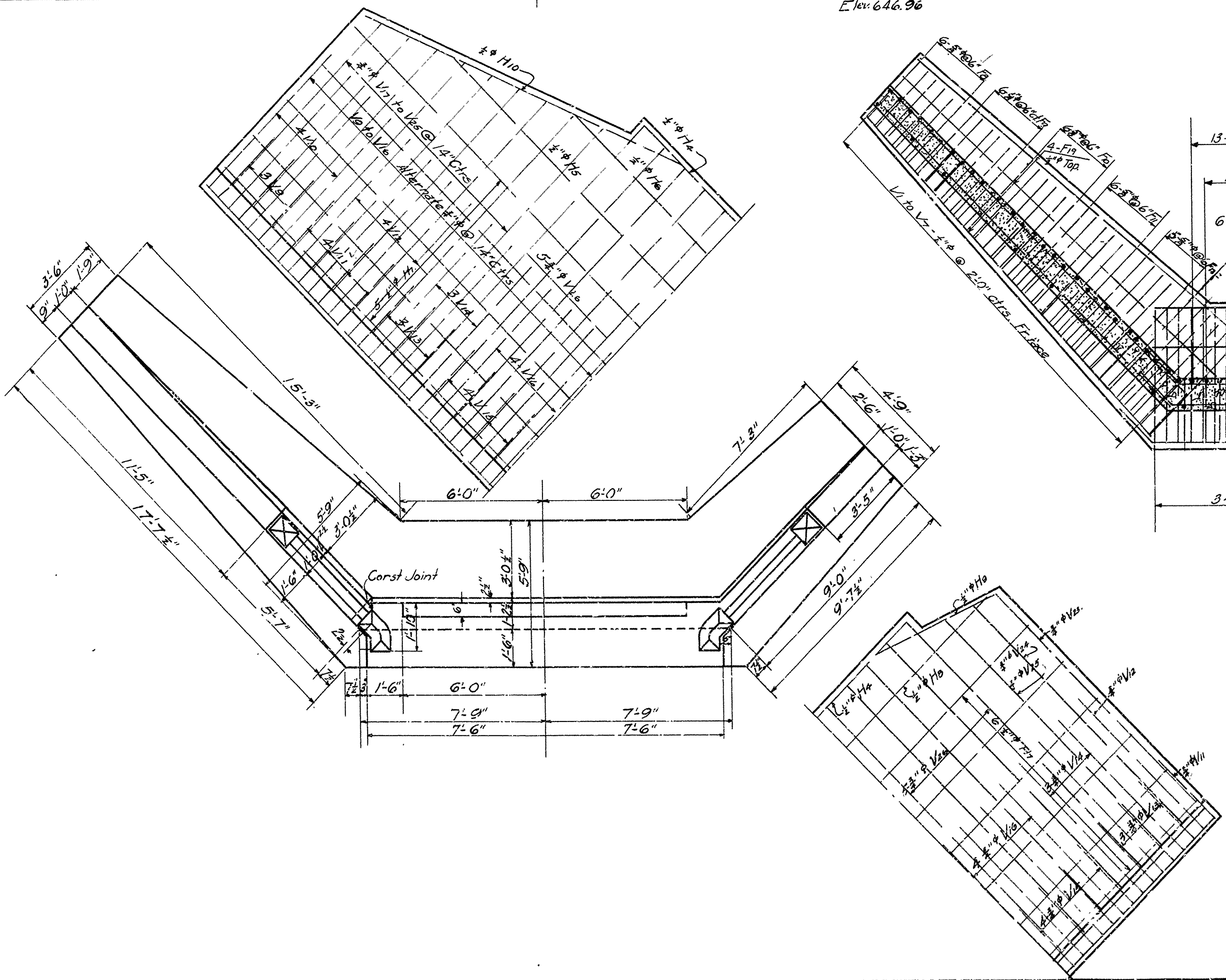
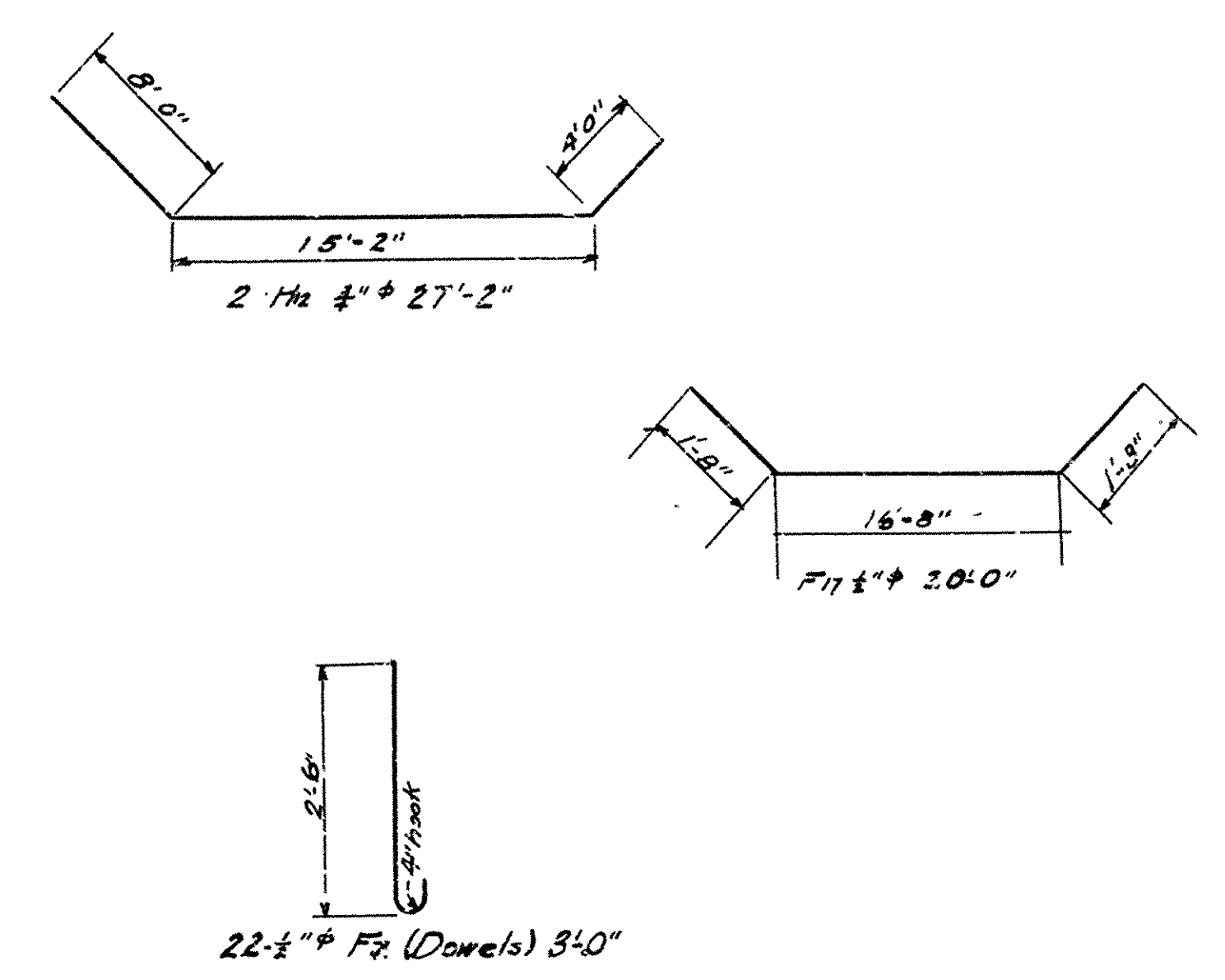
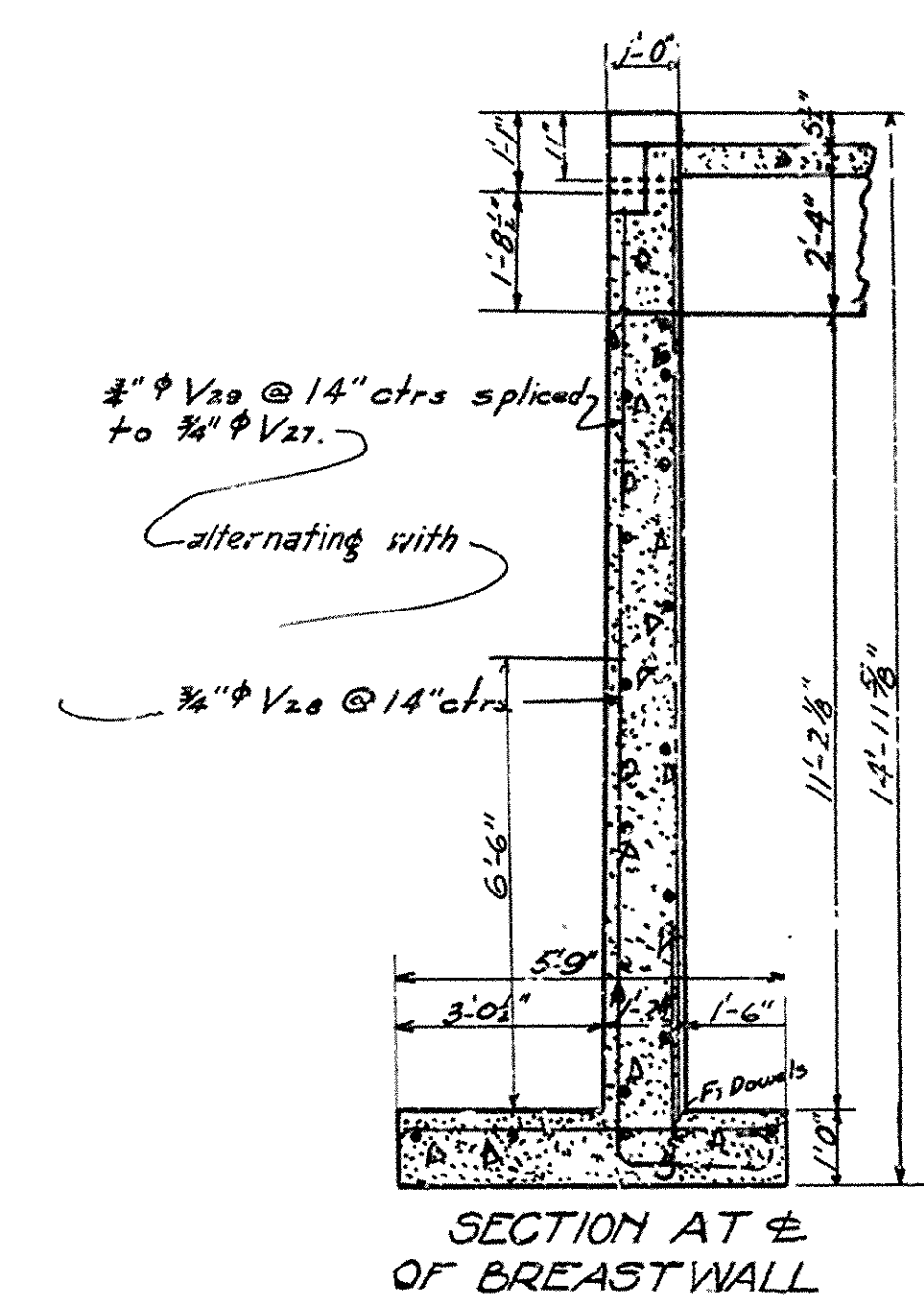
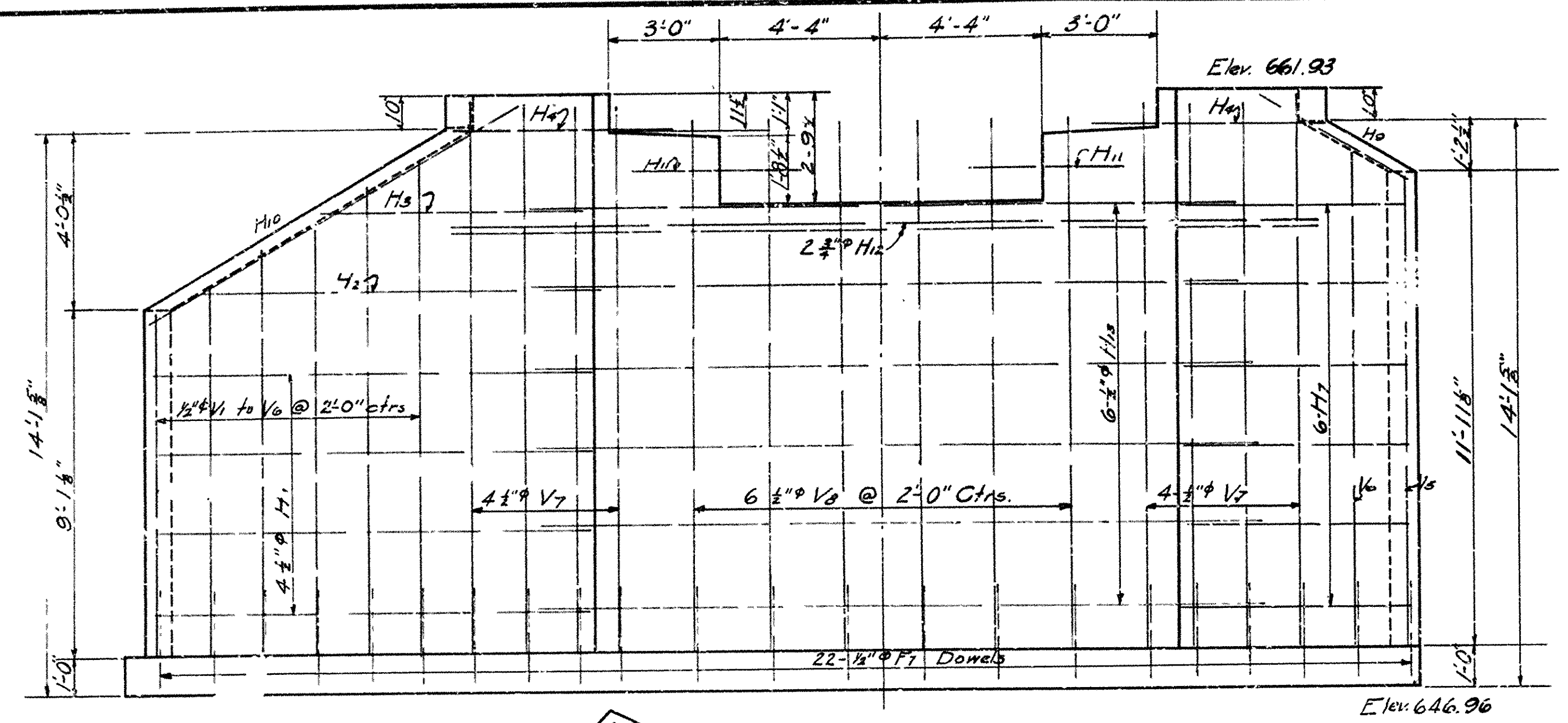
Drawn By: Hiles Date: 6-5-30  
 Traced By: Hiles Date: 6-11-30  
 Checked By: Hiles Date: 6-16-30

BRIDGE ENGINEER

BRIDGE NO. 1243 DRAWING NO. 332



FISCAL YEAR	SHEET NO.	TOTAL SHEETS



DETAILS  
 ABUTMENT NO. 1  
 FOR BRIDGE OVER PINEY CR.  
 JOHNSON CO.

ROUTE 123 SEC. 3  
 ARKANSAS STATE HIGHWAY COMMISSION  
 LITTLE ROCK, ARK.  
 Drawn By: JWS Date: 6-27  
 Traced By: FMM Date: 6-10-30  
 Checked By: LTB Date: 6-16-30  
 BRIDGE NO. 1243  
 Scale: 1/8" = 1 ft.  
 DRAWING NO. 3324

BRIDGE ENGINEER